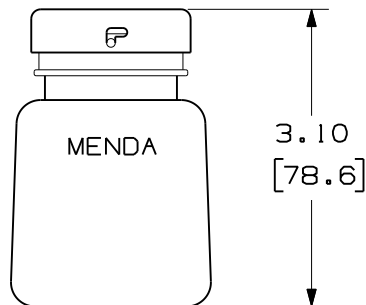
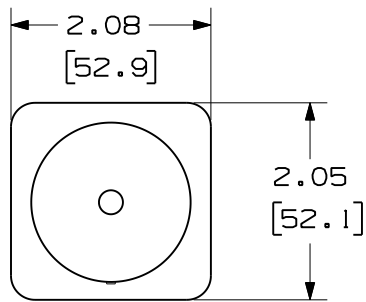


THIS COPY IS PROVIDED ON A RESTRICTED BASIS AND IS NOT TO BE USED IN ANY WAY DETRIMENTAL TO THE INTERESTS OF PANDUIT CORP.



PANDUIT P/N	WEIGHT
FALC	.143 LB/EA 64.75 g/EA

NOTES:

1. SEE CURRENT CATALOG FOR ADDITIONAL PART SUFFIXES TO INDICATE PACKAGE QUANTITY.
2. PLASTIC BOTTLE HAS A HANDS FREE PUMP AND IS TO BE USED FOR HOLDING ALCOHOL.
3. BOTTLE HAS A VOLUME OF APPROX. 4 OZ.
4. DIMENSIONS IN PARENTHESES ARE IN METRIC.

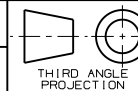


REV	DATE	BY	CHK	DESCRIPTION	ECN	R	CUST	SUP	OTH
1	04-19-05	MYW		RELEASED TO PRODUCTION	35560-96				

G.O.F. KIT ALCOHOL BOTTLE
WITH HANDS FREE PUMP
CUSTOMER DRAWING



PANDUIT™
CORP.
TINLEY PARK, ILL 60477



ALL DIMENSIONS ARE GIVEN IN INCHES
UNLESS OTHERWISE SPECIFIED.
DIMENSIONAL TOLERANCES ARE:
(.X) (.XXX)
(.XX) ±.125(.3) ANGLES

DRAWING FILENAME
D35560ES_DC_00A.prt

SCALE
NONE

DRAWN BY
JBA

REVIEW DRAWING NUMBERS

PART NO.
FALC

DATE
07-01-97

DRAWING NO.
35560-96

CHK'D
CEF

SIZE
A